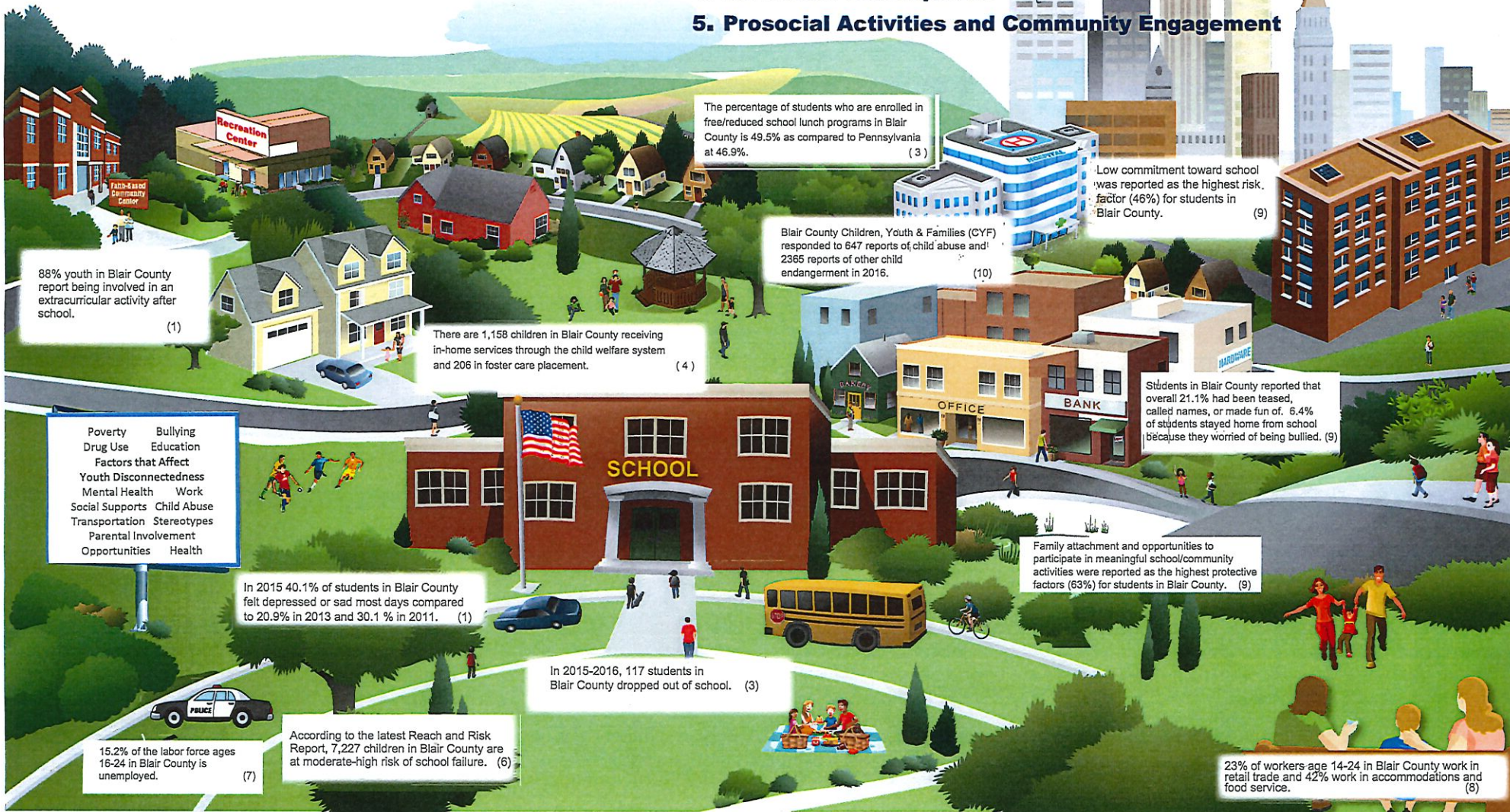


Youth Disconnection in Blair County

RURAL COUNTY IMPACT CHALLENGE PRIORITY AREAS

1. School Attendance & Academic Success
2. Mentoring
3. School and Community Interventions
4. Workforce Development
5. Prosocial Activities and Community Engagement

Disconnected Youth are teenagers and young adults between the ages of 16 and 24 who are neither in school nor working. In 2015, 11.9 % of youth adults in America were disconnected. For Pennsylvania, that rate was 12.3 % and for Blair County 14.4 % . (2)



88% youth in Blair County report being involved in an extracurricular activity after school. (1)

(1)

There are 1,158 children in Blair County receiving in-home services through the child welfare system and 206 in foster care placement. (4)

(4)

The percentage of students who are enrolled in free/reduced school lunch programs in Blair County is 49.5% as compared to Pennsylvania at 46.9%. (3)

(3)

Blair County Children, Youth & Families (CYF) responded to 647 reports of child abuse and 2365 reports of other child endangerment in 2016. (10)

(10)

Low commitment toward school was reported as the highest risk factor (46%) for students in Blair County. (9)

(9)

Students in Blair County reported that overall 21.1% had been teased, called names, or made fun of. 6.4% of students stayed home from school because they worried of being bullied. (9)

(9)

Family attachment and opportunities to participate in meaningful school/community activities were reported as the highest protective factors (63%) for students in Blair County. (9)

(9)

In 2015 40.1% of students in Blair County felt depressed or sad most days compared to 20.9% in 2013 and 30.1 % in 2011. (1)

(1)

In 2015-2016, 117 students in Blair County dropped out of school. (3)

(3)

According to the latest Reach and Risk Report, 7,227 children in Blair County are at moderate-high risk of school failure. (6)

(6)

15.2% of the labor force ages 16-24 in Blair County is unemployed. (7)

(7)

23% of workers age 14-24 in Blair County work in retail trade and 42% work in accommodations and food service. (8)

(8)

- | | |
|--|-------------|
| Poverty | Bullying |
| Drug Use | Education |
| Factors that Affect Youth Disconnectedness | |
| Mental Health | Work |
| Social Supports | Child Abuse |
| Transportation | Stereotypes |
| Parental Involvement | |
| Opportunities | Health |

(1) Pennsylvania Youth Survey (PAYS 2015) <http://www.pccd.pa.gov/Juvenile-Justice/Documents/PAYS/2015%20County%20Reports/Blair%20County%20Profile%20Report.pdf>
 (2) Measure of America: Youth Disconnection in America (March 2017)
 (3) Pennsylvania Department of Education (2015 - 2016 Data and Statistics Report)
 (4) [https://www.partnerships.org_State_of_the_Child_County_Profile_\(Blair_2017\)](https://www.partnerships.org_State_of_the_Child_County_Profile_(Blair_2017))
 (5) Pennsylvania Department of Education (2014 - 2015 Data and Statistics Report)
 (6) PA Office of Child Development and Early Learning Reach and Risk Report
 (7) 2010 - 2014 American Community Survey
 (8) Southern Alleghenies and Workforce Development (EMS1 2015.4 class of worker)
 (9) 2015 Pennsylvania Youth Survey
 (10) Blair County Data